



Tengzhou Star Smith Metal Products Co.,Ltd



目录 CONTENTS

1 Company Introduction

2 Products & Advantages

3 Steel Fiber Application

4 Project Cases

5 Partners



1 COMPANY INTRODUCTION



Tengzhou Star Smith Metal Products Co., Ltd. is one of the top three enterprises specializing in steel fiber production in China and has participated in the construction of national projects several times.



Established in 2011, our company can provide an annual production scale of up to 30,000 tons of steel fiber for concrete. It mainly produces glued&loose hooked end steel fiber and copper-coated micro steel fiber.

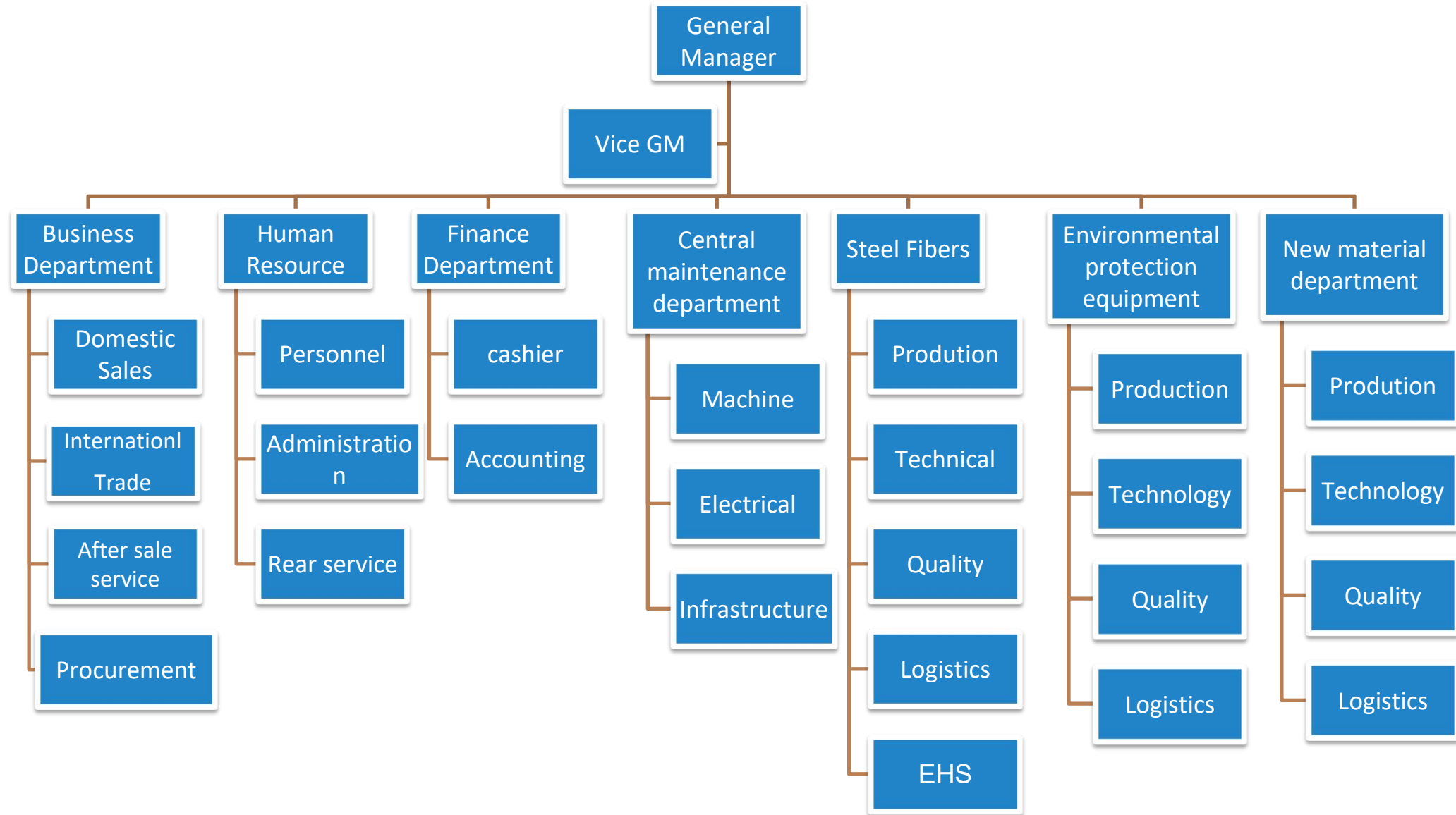


SDS has a complete set of independently developed production equipment and technology, and currently its steel fiber has obtained multiple national patents. We can customize the production of steel fibers and recommend the optimal solution according to customer requirements.



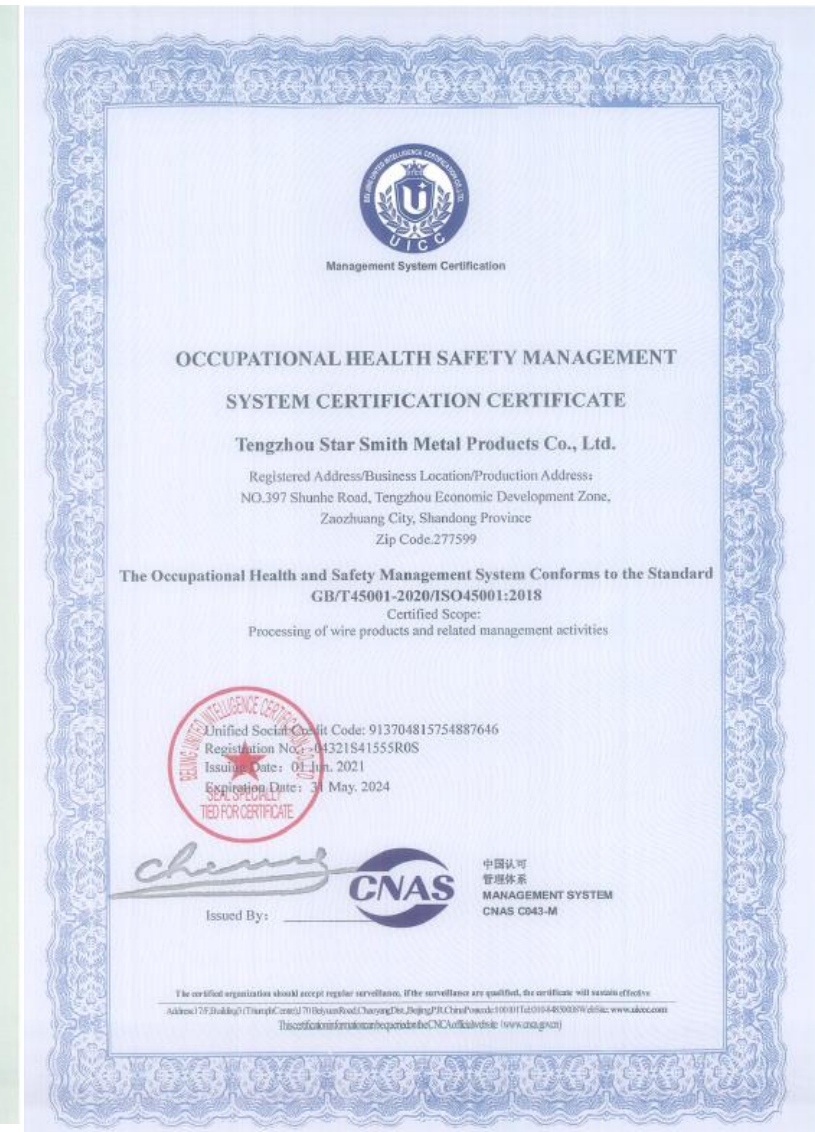
公司架构

THE STRUCTURE OF THE ORGANIZATION





ISO9001/14001/45001 Certificate





CE & High-Tech Enterprise Certificate





SDS钢纤维销售网络遍布全世界并远销东南亚、欧美等多个国家和地区，产品深受广大国内外客户认可。

越南
Viet Nam

泰国
Thailand

韩 国
South Korea

新加坡
Singapore

马来西亚
Malaysia

波兰
Poland

美国
USA

荷兰
Netherlands

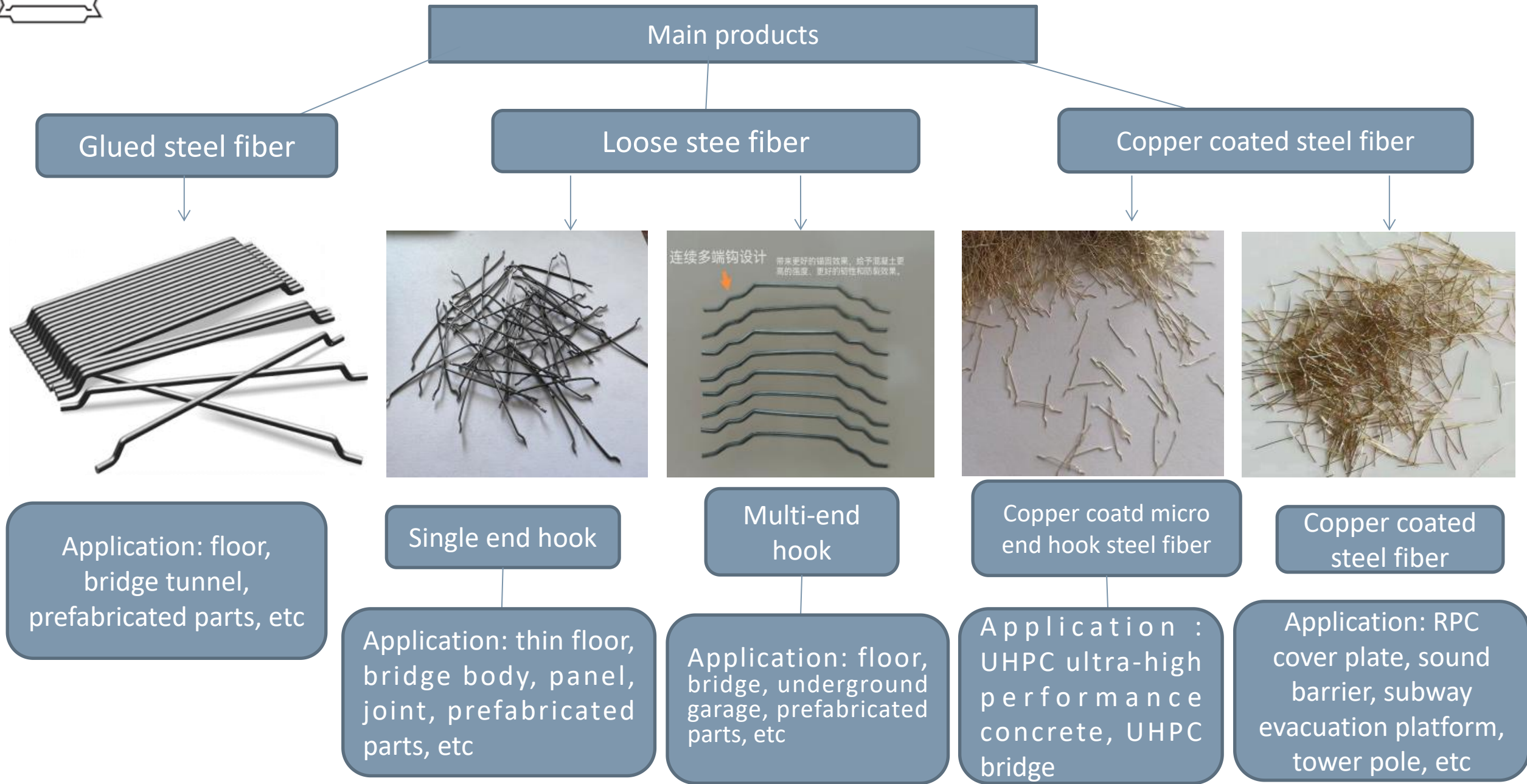
...



Our sales network covers the world and is exported to multiple countries and regions such as Southeast Asia, Europe and America.



二、Main products





Product specification

Code	L/D	Length (mm)	Diameter (mm)	Shape	Type	Tensile strength (MPA)					Roots/kg	Application
						≥1150	≥1300	≥1800	≥2200	≥2850		
SD80/60G	80	60	0.75	end hook	Glued	▲	▲	▲	▲		4600	Industrial floor, bridge and so on
SD80/50G	80	50	0.65	end hook	Glued	▲	▲	▲			7200	
SD70/35G	70	35	0.55	end hook	Glued	▲	▲	▲			15000	
SD55/50	55	50	0.90	end hook	Loose	▲	▲				3900	Industrial floor,Parking,bridge,tunnel and so on.
SD70/50	70	50	0.7	end hook	Loose		▲	▲	▲		4300	
SD50/35	50	35	0.75	end hook	Loose	▲	▲	▲	▲		8100	
SD50/30	50	25	0.55	end hook	Loose	▲	▲				16000	
SD1823	62	13±1	0.18-0.23	camber	Copperize					▲	280000	RPC and UHPC
SD2013	65	13±1	0.20	straight	Copperize					▲	310000	
SD2213G	59	13±1	0.22	end hook	Copperize					▲	250000	

SD: SI DA Steel fiber; Diameter tolerance ±0.015mm,Length tolerance ±1mm。



Product performance

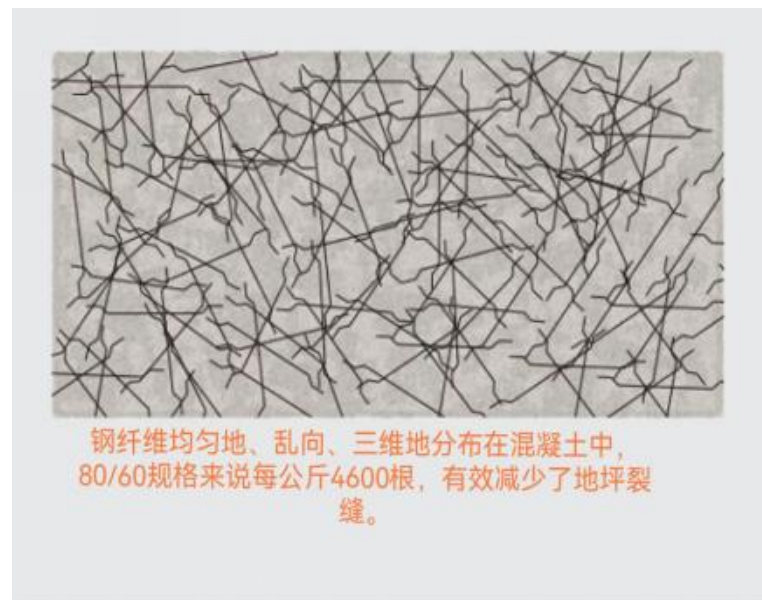
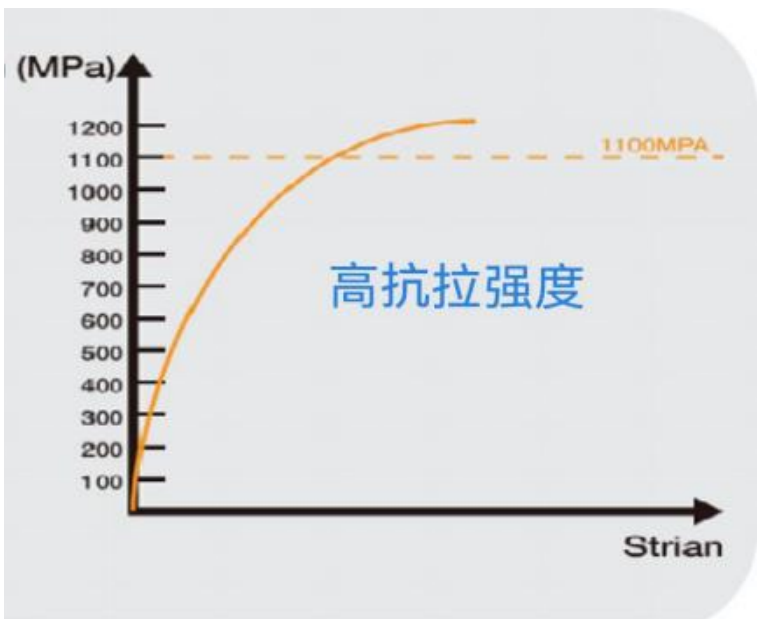


粘结成排钢纤维

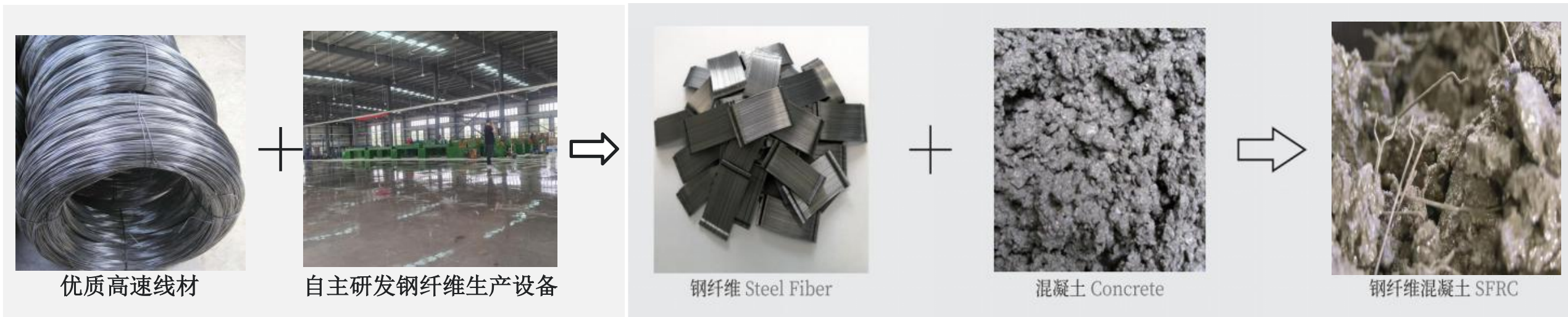
Steel fibers are widely used in industrial floors, logistics warehousing, transportation buildings (roads, Bridges, tunnels, airport runways), precast concrete components, underground garages, water conservancy facilities, etc.

Glued in rows helps avoid steel fiber cluster in concrete mixing, and ensure the distribution of fiber. SD80/60 series steel fibers are bonded by water-soluble glue, mixed and dispersed in water, which can be easily and quickly distributed into the concrete. The design of steel fiber on both ends hook, it is the best anchor design.

When the steel fiber is subjected to heat expansion and cold contraction in the concrete and the ground bearing pressure, the steel fiber will better absorb energy. Play the role of crack prevention, strengthening and toughening of steel fiber.

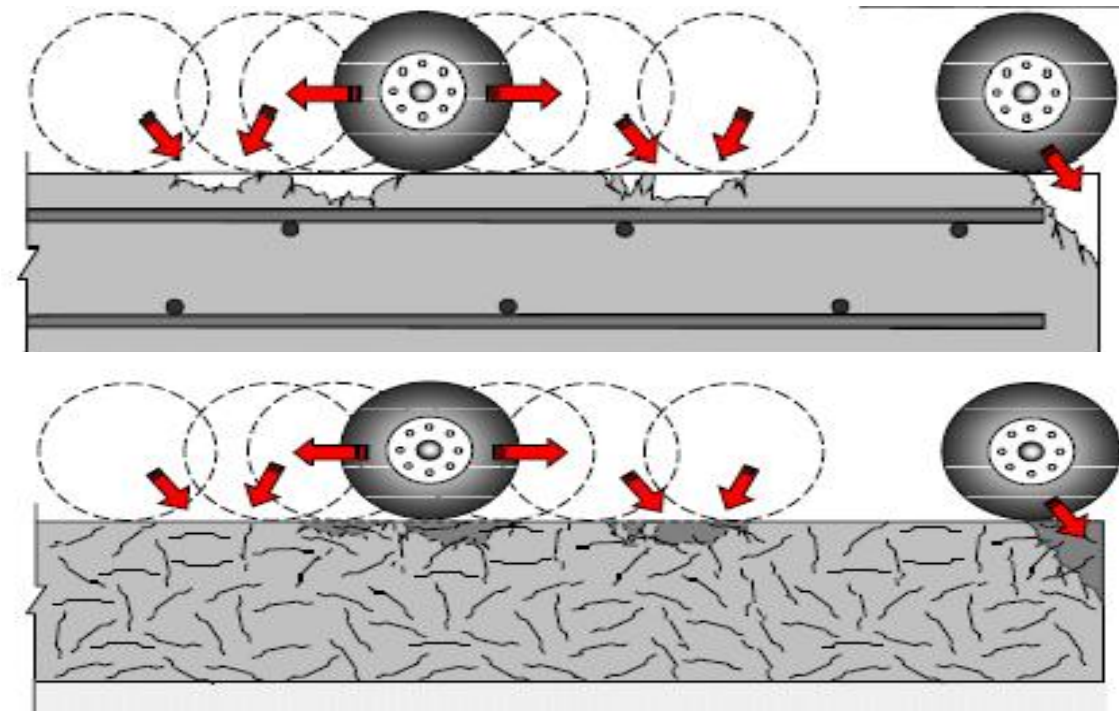


Steel fiber concrete advantages



Superior crack control and damage resistance

- (1) Reinforcement principle of different make better reinforcement effect
- (2) Bridge crack control principle limit of fracture
- (3) "Unprotected" a sharp rise in the surface layer concrete structures, jointing position ability to resist damage





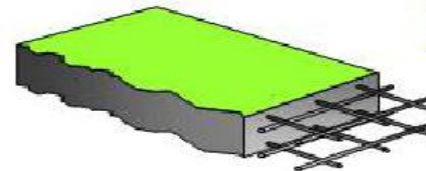
2. Cost saving

The cost of steel fiber concrete and steel mesh concrete can be saved by 15%-25%.

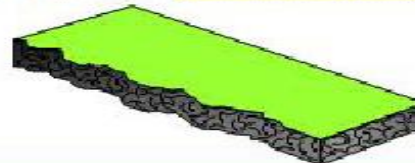
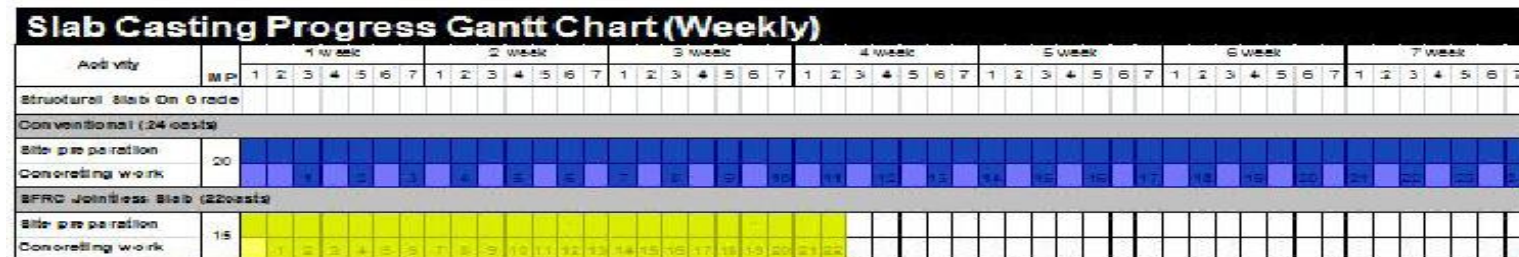
Steel Fiber Concrete VS Steel Bar Concrete										
Steel Rebar Concrete								Steel Rebar Concrete		
Floor Thickness mm	Concrete Price RMB/m ³	Diameter mm	Bar grid spacing mm	Single Double	Rebar kg/m ²	Unit price RMB/kg	Lashing charge RMB/kg	Concrete price	100	RMB/m ²
200	500	10	150	Double	17.26	5	1	Steel rebar Price Including lashing	103.58	RMB/m ²
								Rebar+Concrete	203.58	RMB/m ²
Steel Fiber Concrete								Steel Fiber Concrete		
Floor Thickness mm	Concrete Price RMB/m ³	Steel fiber Type	Dosage kg/m ³	Dosage/m ² kg/m ²	Purchase cost RMB/kg	Sale Price RMB/kg	Price/m ² RMB/m ²	Concrete price	100	RMB/m ²
200	500	SD80/60G	20	4	11	13	52	Steel Fiber Price	52	RMB/m ²
Steel fiber concrete can save 15%-25% of the cost than steel rebar concrete								Steel fiber+Concrete	152	RMB/m ²
								Cost saving	51.58	RMB/m ²
								Saving proportion	25.34%	

3. Easy construction and saving time

- * Save the time of tying steel mesh;
- * Tank car open directly to the casting area, save the time of pumping or erection of bridge; Convenient
- * Quickly casting area.



2天准备 + 1天浇筑 + 1天切割



1天准备 + 1天浇筑

26天



端钩散丝钢纤维介绍



Single-ended hook

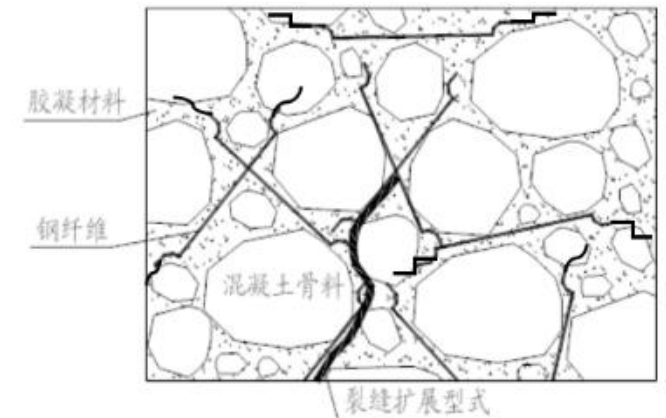
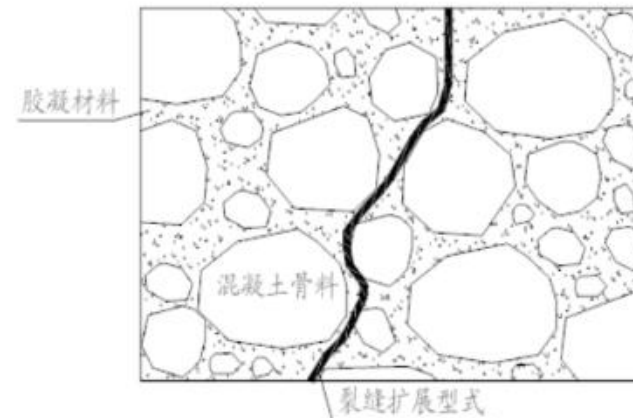
Continuous multi-end hook

Loose hooked end steel fiber

The end hook loose steel fiber can be widely used in industrial floors, underground garage, 5-8 cm leveling layers on the second floor, traffic buildings (roads, bridge bodies, expansion joints, tunnel spraying), concrete prefabricated components, etc.

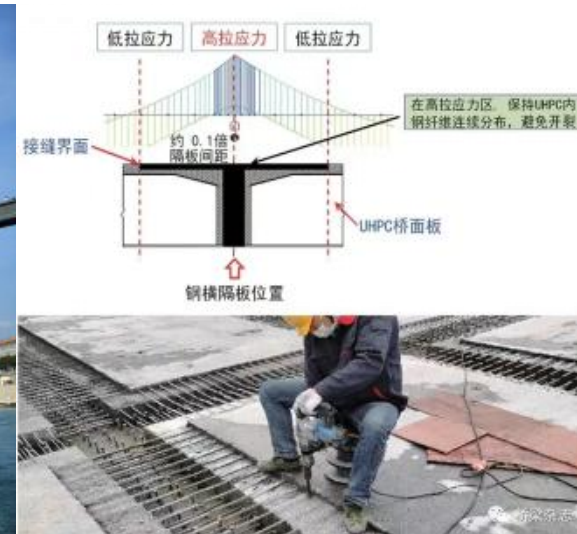
Compared with glued steel fibers in rows, it has lower cost and better economic value.

Continuous multi-end hook has better energy absorption effect. Thereby bring higher strength and toughness of concrete, and give full play to that anti-crack, strengthening and toughening functions of steel fiber.





RPC UHPC Copper coated steel fiber



Copper-plated steel fiber is mainly used in reactive powder concrete (RPC) and ultra-high performance concrete (UHPC). Reactive powder concrete (RPC) and ultra-high performance concrete (UHPC) are composed of inorganic cementing materials such as cement, fine aggregate with good gradation and different kinds of chemical additives. They are a new generation of engineering materials with excellent properties and wide application fields.

Type	Diameter(mm)	Length(mm)	L/D	Tensile Strength (MPa)	Roots/kg	Application
SD2013	0.20 ± 0.015	$13 \pm 1\text{mm}$	65	>2850	>310000	UHPC
SD2213	0.22 ± 0.015	$13 \pm 1\text{mm}$	59	>2850	>250000	UHPC
SD1823	$0.18-0.23 \pm 0.015$	$13 \pm 1\text{mm}$	62	>2850	>280000	RPC
SD1835	$0.18 \sim 0.35 \pm 0.015\text{mm}$	$13 \pm 1\text{mm}$	50	>2850	>160000	RPC



Application area



Industrial floor



Logistics warehousing and
stereoscopic warehouse



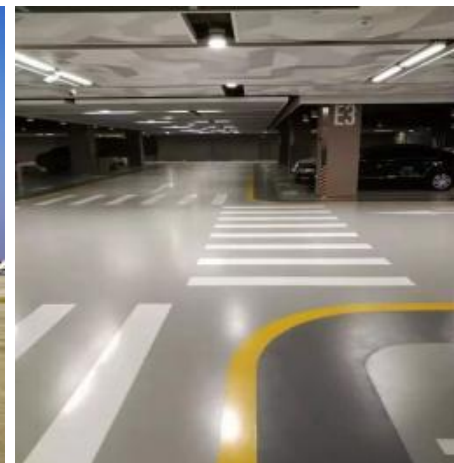
Cold chain logistics, cold storage



Airplane hangar



Airport apron



underground
parking



Cargo yard



Application area



Bridge



Road



Tunnel

Steel fiber, as an excellent new composite material, which is widely studied and applied in various fields of engineering. In recent decades, it has been applied to roads, bridges, tunnels, water conservancy, marine and industrial buildings in China, and achieved good results.

As far as highways and urban roads are concerned, steel fiber reinforced concrete can be used to treat subgrade diseases and build or rebuild pavements, especially for the overlay of parking lots, toll stations, heavy traffic roads and old concrete pavements, as well as the pavements (tunnels) and soft foundation pavements (base reinforcement) where the ground elevation is limited.



4、Project cases-1



Project name: SLBD project

Project area: 55,000m²

Fiber type: SD9050-2w

Usage: 200tons

Location: Tengzhou ,Shandong Province

Year : 2023



4、 Project cases

Project name:

ATLAS WARD Project

Fiber type: SD7050 (CE)

Usage: 426 tons

Location: Warsaw, Poland

Year :2022





4、Project cases



Project name: Sunway Steel Strucuture project

Project area: 30,000m²

Fiber type: SD80/60G

Usage: 120tons

Location: Tengzhou ,Shandong Province

Year :2022



4、Project cases



Project name: Kehanmawei project

Project area: 17,000m²

Fiber type: SD80/60G

Usage: 70tons

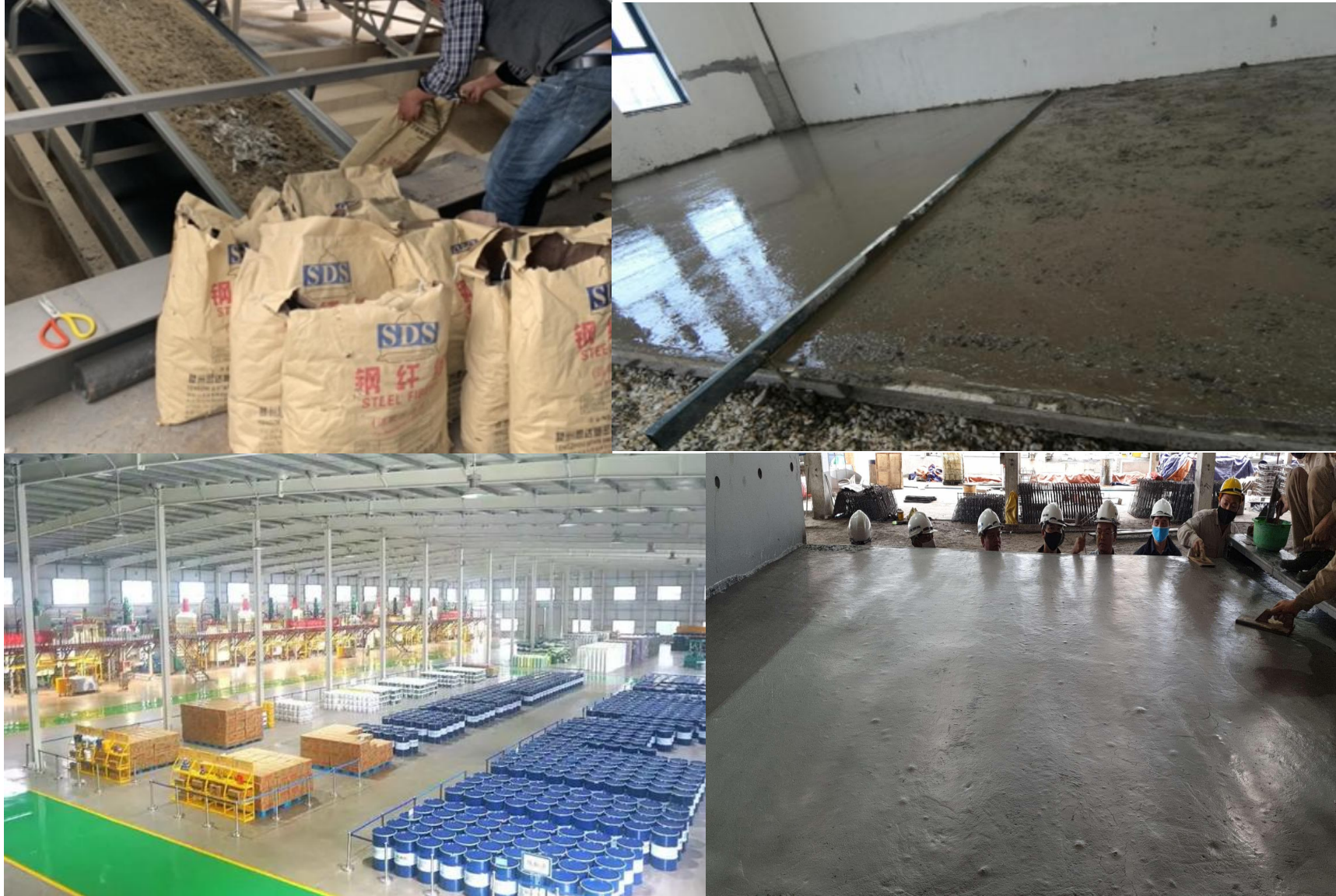
Location: Huzhou,Zhejiang province

Year : 2021





4、Project cases





4、 Project cases



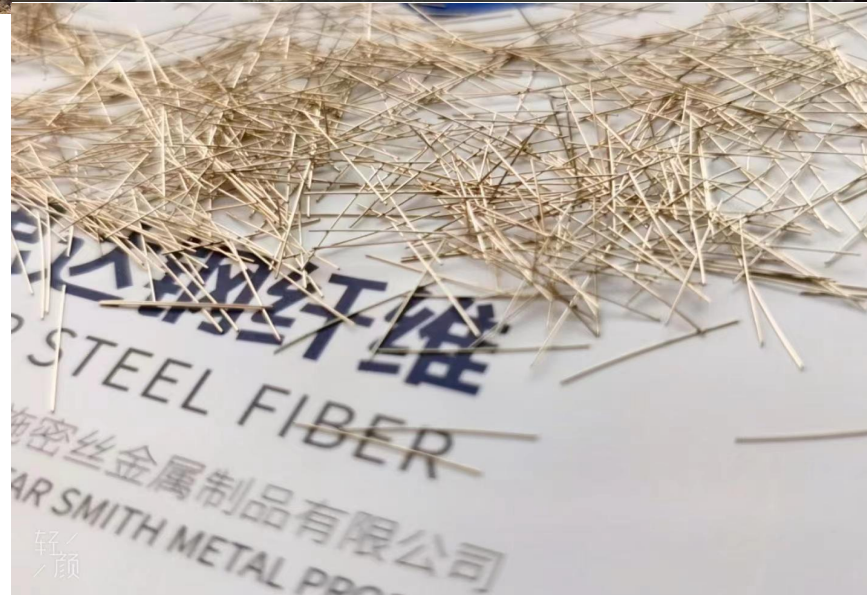
Project name: UHPC-bridge project

Fiber type: UHPC-SD2013

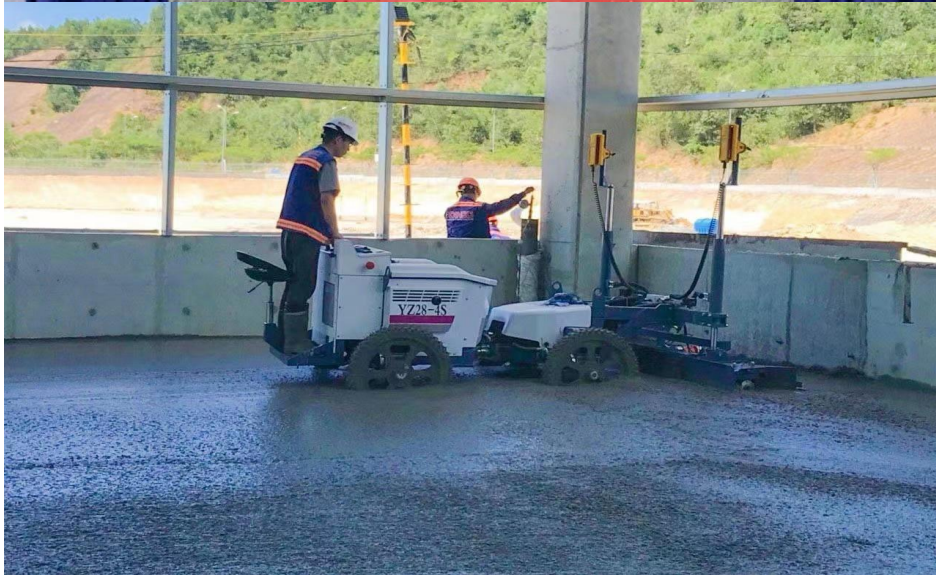
Usage: 19 tons

Location: Viet Nam

Year : 2020



4、 Project cases



Project name: DINCO-VN project

Project area: 120,000m²

Fiber type: SD80/60G

Usage: 140 tons

Location: Da Nang, Viet Nam

Year : 2019



4、Project cases



Project name:
TUX Environmental protection equipment
project

Project area: 20,000m²

Fiber type: SD80/60G

Location: Tengzhou, Shandong Province

Year : 2020





4、Project cases



JD Group is one of the largest e-commerce platforms in China. In May 2021, JD Logistics was listed on the main board of the Hong Kong Stock Exchange. JD Logistics Suqian Logistics Park uses 52 tons of SDS steel fiber.

Project name:

JDL project

Project area: 13,000m²

Fiber type: SD80/60G

Usage: 52tons

Location: Suqian ,Jiangsu province

Year : 2015





Cooperation partners



中建八局



蜀道集团
SDIG



中交二航局



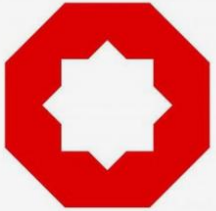
CGGC
中国葛洲坝集团



SRBG
四川路桥



首钢集团
SHOUGANG GROUP



中国建材



淮安机场
HUAIAN AIRPORT



中国铁建

JDL 京东物流

Lenovo 联想



中国化学



中国电建
POWERCHINA



红塔集团



宜家家居

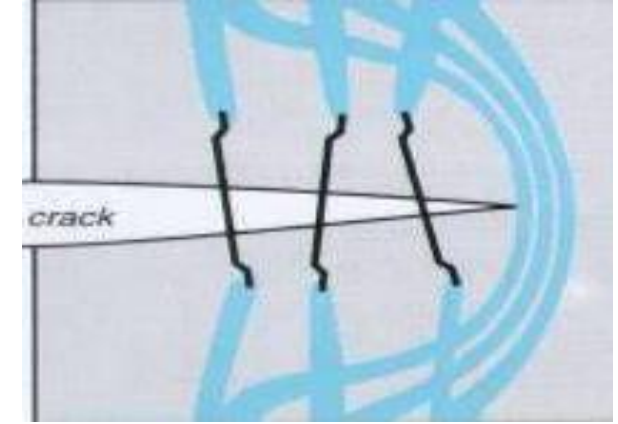
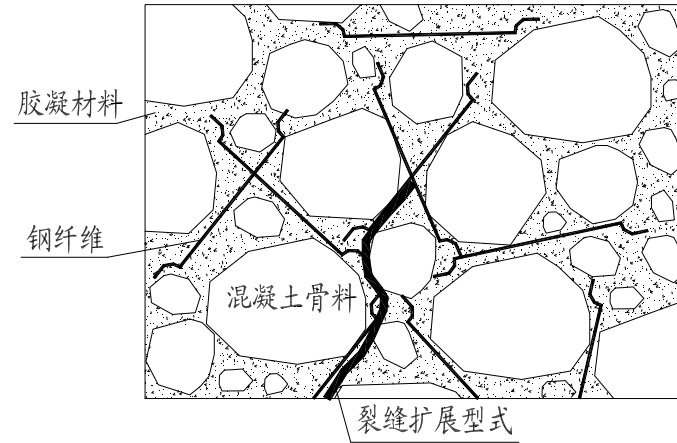
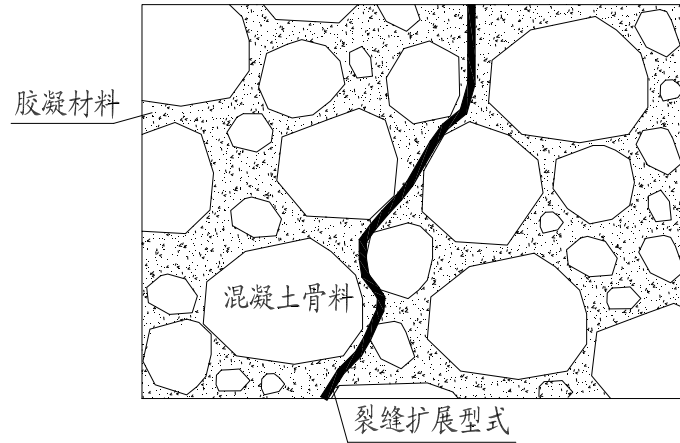


中国重汽
SINOTRUK

...



CONCLUSION



Reduce cost

Convenient construction

Save construction period

Higher strength & Safer



THANK YOU

Let's build the future !